



Fairhurst

Gallery & Framers

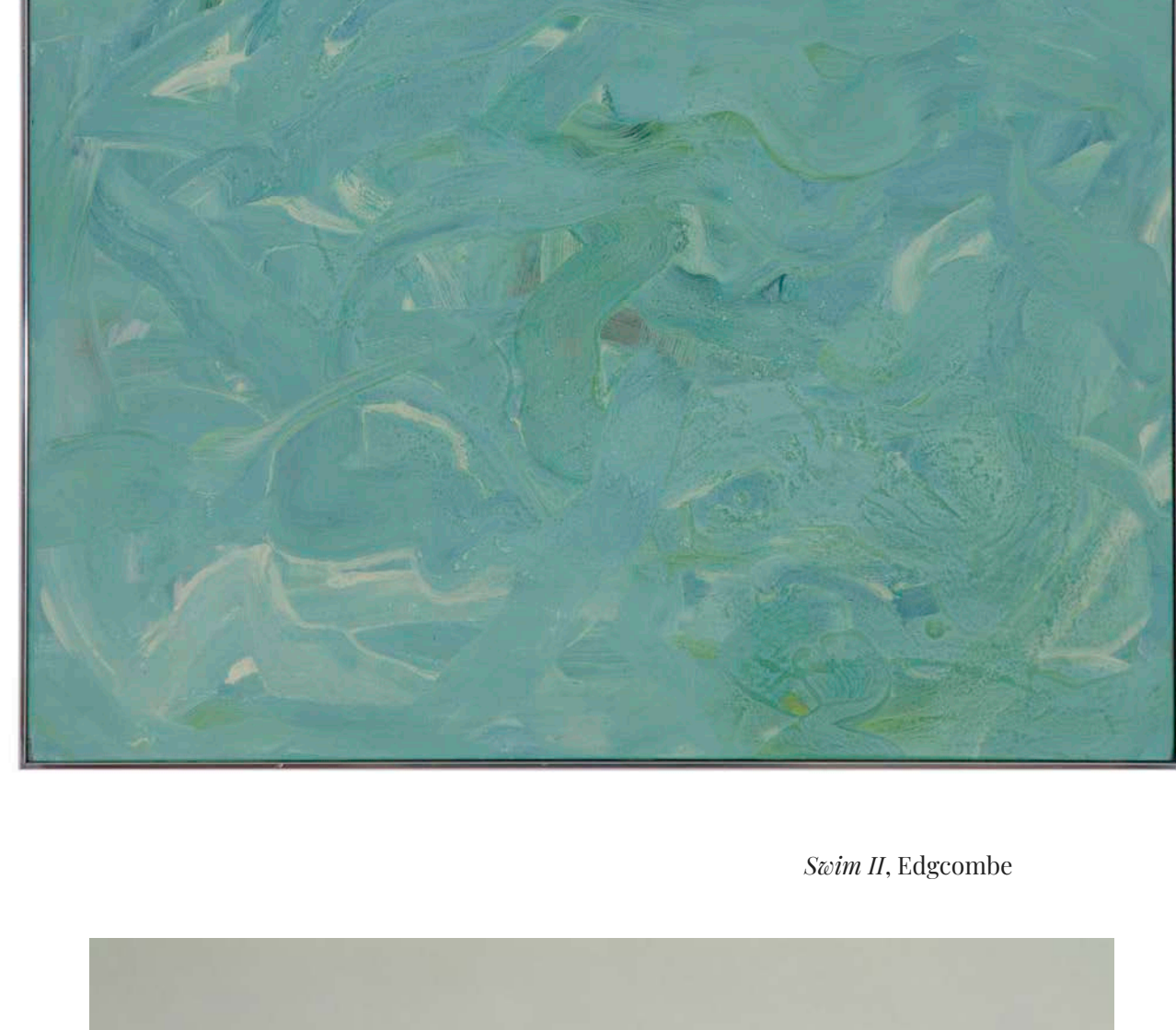
News & Updates

From everyone at the Fairhurst Gallery and Framers, we would like to wish you the happiest of new years. Sending our best wishes for 2021.



In League with the Moon

We would like to say a big thank you to everyone who booked on and attended the private view event for *In League with the Moon*, our first exhibition celebrating the reopening of the gallery and our new shop front, as well as everyone who visited and supported us throughout the last months of 2020.



Scin II, Edgcombe



Nitelic Head, Furness



Convergence, Edgcombe

Exclusive Artist Interviews

We are very excited to announce that our exhibiting artists, Gus and Amanda have kindly written some beautiful, insightful responses to a selection of questions for us in an exclusive interview about the *In League with the Moon* exhibition, their work and themselves as practicing artists. The text details, in their own words, the artists' inspirations and influences, how their work arrived to its' current style and the techniques and processes used in their studios:

The title of the exhibition, 'In League with the Moon', is taken from a text by Roger Deakin, titled 'Water Log'. Deakin paved the way for the Wild Swimming movement, sharing his replenishing experiences of swimming the natural waterways of the British Isles, beginning his journey in Suffolk. As Suffolk based creatives, do you and your artistic practice identify with the natural British, and specifically Suffolk landscape and its waters in the same positive, uplifting and restorative ways as that of Deakin?



G: 'I have lived pretty much my whole life in Snape, I feel embedded here and my work has grown from it. More generally I find the Suffolk landscape invigorating, the vast sky, seemingly endless horizon, the solitude found in its woodland, meadows, creeks, estuaries and when travelling the spaghetti road network, not knowing what's around the next corner feeds curiosity. It offers space for introspection and observation.'

A: 'I have always loved water in all shapes and temperatures, if not to swim in then to just look at, listen to...The unpredictability of the Suffolk coastline and serious heat of summer holidays are deep set in my memory from childhood to now and I have realised its importance on so many levels, but ultimately how it represents the opportunity to stop everything else, in that sense it is quite transporting for me, and calming.'

Growing up in London, the Thames was always a marker in getting around the city, all the bridges and differences between south and north were set by the route of the river, areas between which were quite sparse as I was growing up are connected now but the route of the Thames remains constant!

As we moved away from the city - my proviso was to be near to the sea; my go to in the midst of everything else happening- we could never have imagined when we lived in busy Hackney that we would be living in such a remote and different environment, except that we are surrounded by water. With a moat surrounding us, we are on an island and the whole experience of where we live now is animated because of the water. It lets the whole family escape and stop. '

To read the full interview, [click here](#).



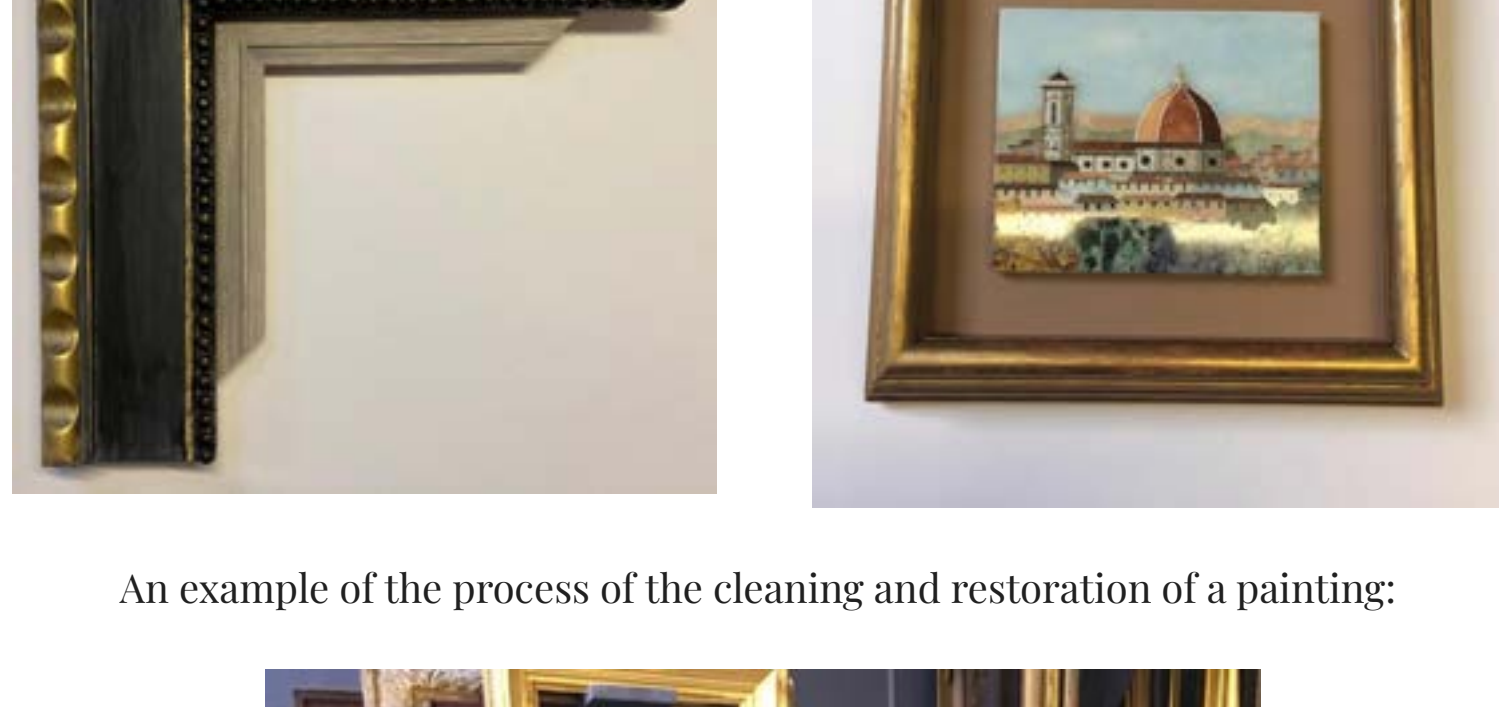
Through Water II, Edgcombe



Wattle and Dink, Furness

News from the Workshop

A collection of images detailing the styles of bespoke framing work completed in the Fairhurst workshop:



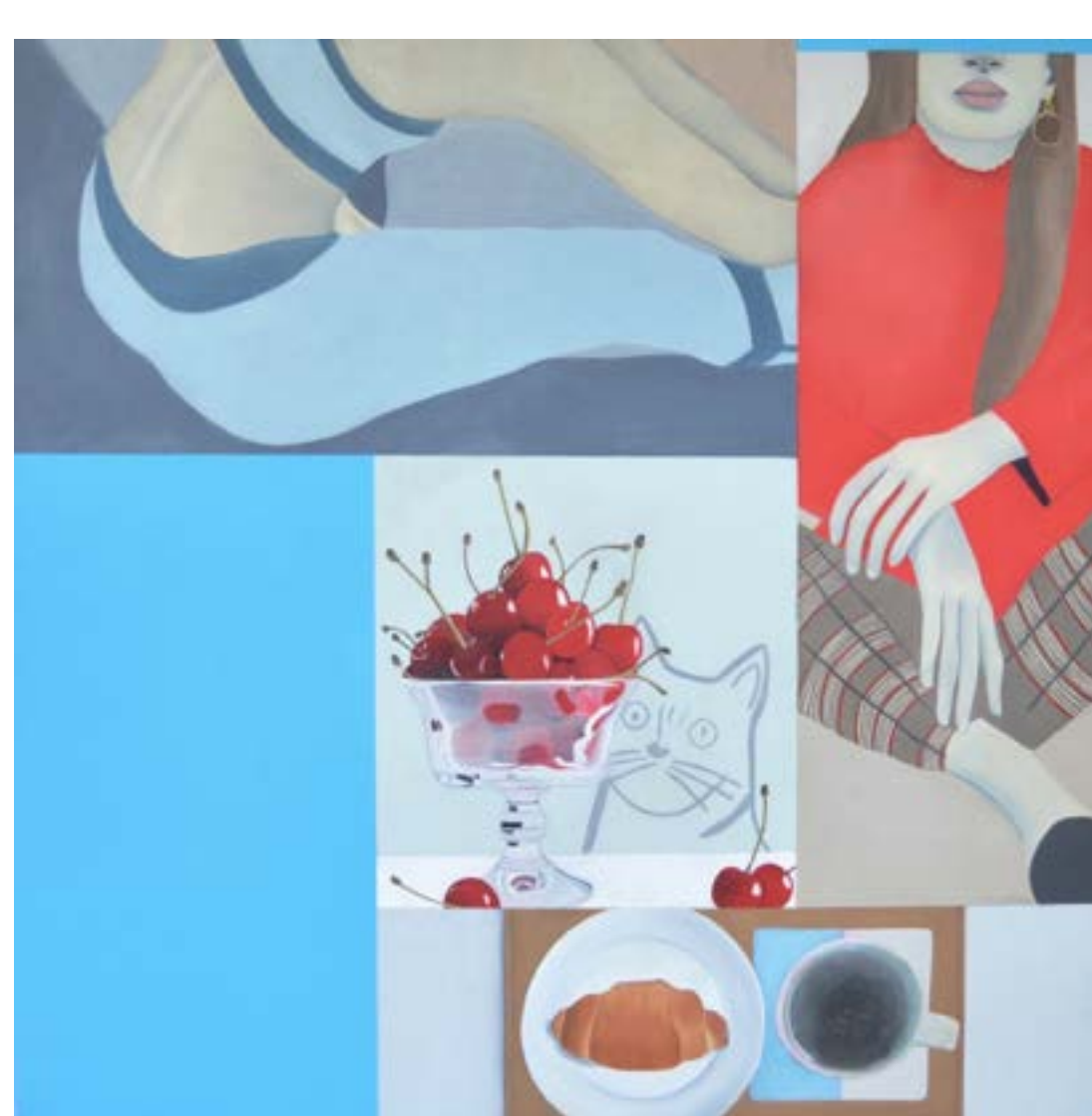
An example of the process of the cleaning and restoration of a painting:



The Framing workshop is currently closed to the public, but we are happy to schedule telephone appointments and accommodate delivery and collection where necessary.

To book an appointment or for all enquiries:
Call 01603 614214
[Click here to email](#)

Jess Burgess Prints



Jess Burgess recently created her first run of works on paper with a limited edition giclee print of her painting 'Alexandra', made exclusively for the Fairhurst gallery!

There are still editions of the print available for purchase.

'Alexandra': Limited Edition Giclee Print
Paper Size: A3 Print, 297 x 420 mm

Signed and numbered, with a certificate of authenticity, mounted and wrapped.

£65, plus postage if required, or can be collected from the gallery.

For enquiries, [click here to send us an email](#), or call 01603 614214

Coming Soon...

Jamie Andrews

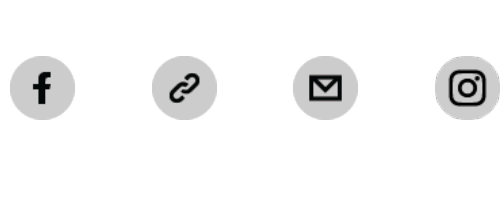


The upcoming exhibition at the Fairhurst gallery is a solo showcase of works by artist Jamie Andrews. Jamie is a Suffolk based creative whose vivid mixed media practice contains an underlying array of complex meanings, emotions and feelings, using childlike symbols and playful metaphors to record relationships and interactions of life and living. His work is very much about play in every sense of the word, mind games to tease the eye and engage the senses.

The exhibition will be open from the beginning of March. As well as a physical exhibit, there will be full online coverage and a detailed, digital booklet of Jamie's showcase available to download from our website for you to enjoy at home.



We hope you enjoy this month's news and updates from the gallery and workshop and we look forward to hopefully being able to share our upcoming plans with you in the near future. Until then we hope you are staying safe and well and we cannot wait to see you when the time comes.



Copyright © 2021 The Fairhurst Gallery and Framers. All rights reserved.

Want to change how you receive these emails?
You can [update your preferences](#) or [unsubscribe from this list](#).

